



MEMBER
ABYC
Setting Standards for Safer Boating

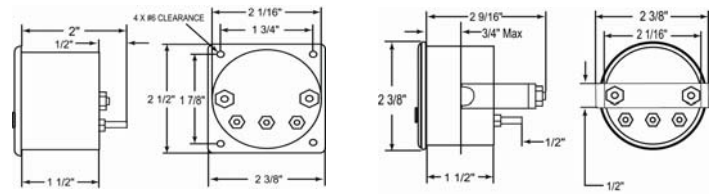
BP500 & WW600 Series Single & Multi-Bilge High Water Alert



Introducing the Multi-Bilge High Water Alert with Intelli-Mute, the only multiple bilge monitoring panel with intelligence at the mute button. With a built-in stainless steel piezo buzzer, this unit has visual indicators which can be seen from all angles. Intelli-Mute ensures that the mute feature cannot be “accidentally” left on or forgotten. Once activated, Intelli-Mute first silences the audible alarm, leaving the back-lit Mute button flashing as a visual reminder. Intelli-Mute then continues to monitor the panel for an additional alert or for the resolution of the original condition. If 5 minutes pass and an alarm condition still exists, Intelli-Mute turns off the mute feature and reactivates the audible alarm, warning that an alarm condition is still present and needs to be resolved. However, the instant an alarm condition is resolved, Intelli-Mute resets the panel, turns off the mute and stands watching, for the next alert. If an alarm condition is detected at any time while muted, Intelli-Mute immediately cancels the mute and activates the audible alarm to warn of the new situation. Ship happens, know when it does.

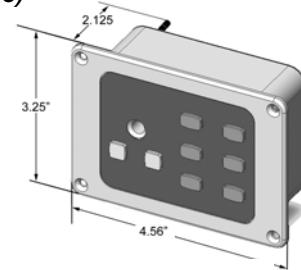
FEATURES & BENEFITS

- Both visual and audible alarms
- Meets Coast Guard regulations [182.530]
- Monitor up to 6 separate compartments
- Temporarily silence alarm with Mute feature
- Built with Intelli-Mute so mute cannot be left on
- Alarm reactivates after 5 minutes of being muted
- Panel resets once alarm condition is resolved
- Remote audible output
- Exceeds both United States Coast Guard and U.L. Standards.



BP500 SQ
(square)

BP500 RD
(round)



WW600

SPECIFICATIONS

WW600, WW602, WW603, WW604		BP500	
Power required:	12Vdc (WW600) 24Vdc (WW600-24)	Power Required:	12Vdc (BP500) 24Vdc (BP500-24)
Power at alarm:	.200 Amps (maximum)	Power used at alarm:	.062 amps.
Power at rest:	.012 Amps	Power used at rest:	.006 amps.
Size:	(Shown Above)	Size: (Shown Above)	
Weight:	11.86 ounces	Weight:	5.75 ounces
Alarm Delay:	No Delay	Alarm Delay:	No Delay

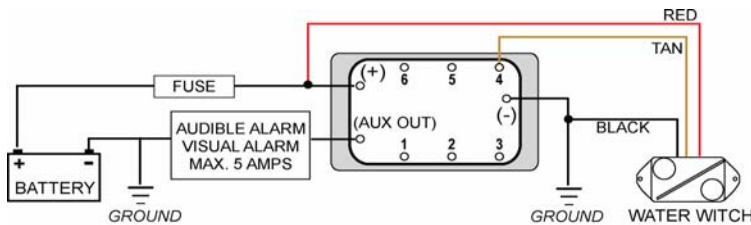
Water Witch, Inc.
1-800-654-4783

10744 Rockvill Street, Suite 103
e-mail: info@WaterWitchInc.com

Santee, California 92071
www.WaterWitchInc.com

Installation / Wiring Instructions

1. Disconnect the battery.
2. Select a mounting location for the multi-bilge or bilge alarm which is easy to see and hear from the helm. Check behind mounting panel for sufficient clearance (~3inch) referring to diagram for dimensions.
3. Use the enclosed template as a guide for cutting the hole (BP500 Does not come with template). Cut the opening, following the instructions on the provided template. De-burr the hole and insert the WW600 or BP500 to check for proper fit. DO NOT FORCE INTO HOLE.
4. Follow the wiring schematic as illustrated in the diagram. (NOTE: the BP500 is wired in the same way: (+) to Pos, (-) to Neg, and the only input to Tan from a Water Witch (or any 12Vdc device))
5. From the WW600/BP500: connect the positive terminal post to the positive side of the battery; connect the negative terminal post to negative side of the battery or ground.
6. From the Water Witch: connect the red wire to the positive side of the battery; connect the black wire to ground; connect the tan wire to the desired numbered terminal post.
7. Check all wires to ensure proper connections.
8. Place WW600 in hole at the desired position. Tighten the WW600 against the mounting surface until flush and secure. Caution: DO NOT over tighten; it may crack the housing or mounting dash / bulkhead.
9. Reconnect the battery.



NOTE: THE NUMBER OF INPUTS VARY BETWEEN BP500s and WW600s (anywhere from 1-6 inputs) but the wiring remains the same (Except BP500 has no AUX out)

Operating Instructions

- When power is applied, the alarm pulses four times with all lights and buttons flashing, indicating the WW600/BP500 is active and working. The WW600/BP500 stays in this ready mode until triggered.
- When there is an alert condition, the corresponding light from the compartment where the alert was triggered illuminates. The audible alarm activates and will continue to pulse so long as an alarm condition is present.
- Pushing the mute silences the alarm but leaves the button flashing as a visual reminder.
- If the alarm condition still exists after being muted for 5 minutes or another alert condition happens, Intelli-mute re-engages the audible alarm and resets the 5 minute counter. This cycle continues until the alarm condition is resolved.
- Only when the alarm condition is resolved will Intelli-mute automatically reset back to the default ready mode (armed and un-muted).
- The TEST button allows a quick check of the WW600 or BP500's audible output and visual flash mode buttons. Pressing the TEST button during an active alarm mode will not affect the alarm condition.
- If the mute button is accidentally pressed and there is no alarm condition, the WW600 resets to its ready mode after 5 minutes.



BP500 (1 Compartment)



WW602 (2 Comp.)



WW603 (3 Comp.)



WW604 (4 Comp.)



WW600 (6 Comp.)

PURCHASE INFORMATION

Name	Model #	Bezel*	Color	Voltage	Warranty
Bilge Alarm	BP500	Plastic, Round or square	Black or white	12Vdc	2 Years
_____	BP500-24	_____	_____	24Vdc	_____
Multi-Bilge	WW600 series	Aluminum	Black or White	12Vdc (WW600)	2 years
_____	WW600-24 series	_____	_____	24Vdc (WW600-24)	_____